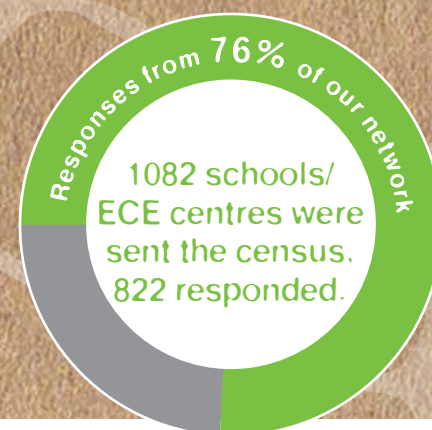


# Enviroschools

## Key Results of the 2017 Enviroschools Nationwide Census



He mihi nui ki a koutou katoa.

In 2017, Toimata Foundation, the national support organisation for the Enviroschools Programme, undertook a nationwide census of the Enviroschools network. The response rate was high and we now have a wealth of valuable information for reporting and on-going programme development.

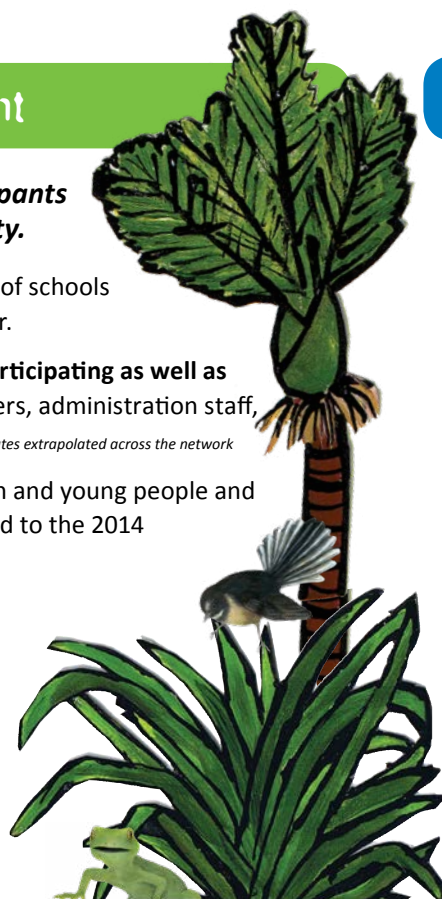
This census has reaffirmed the great capacity of the Enviroschools network to empower young people and communities so they can take action and achieve change. We thank the schools and centres that contributed to the census and whose on-going commitment to the Enviroschools Programme is helping to create healthy, peaceful, sustainable environments. We acknowledge all partners, funders and supporters nationally and locally for their on-going support and involvement.



### Significant nationwide involvement

**A large number of committed and active participants and a focus on collaboration with the community.**

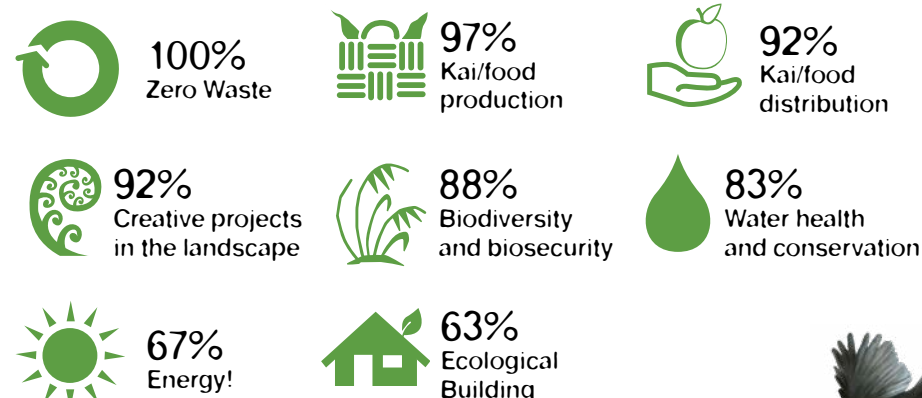
- **More than 1,100 Enviroschools** – representing 34% of schools and 6% of the large Early Childhood Education sector.
- **152,000 children and young people are actively participating as well as 15,700 school and centre staff\*** – teachers, caretakers, administration staff, principals, boards of trustees. *\*These numbers are teachers' estimates extrapolated across the network*
- **Involvement is growing** – around 50% more children and young people and 70% more adults are actively participating, compared to the 2014 Enviroschools Census.
- **88% of Enviroschools are connecting with other organisations in their community** – councils, government agencies, restoration groups, iwi, landowners, businesses etc.
- **72% of Enviroschools** believe that the programme has a substantial positive influence on **interaction with families/whānau and the wider community.**



### A wide range of action for sustainability

**All Enviroschools are engaging in a range of actions including environmental, social, cultural and economic sustainability.**

Environmental sustainability actions:



Cultural, Social and Economic sustainability actions:



\* Percentages are the total % of participants who are taking one or more actions in the area

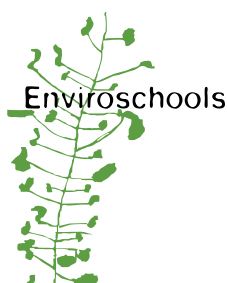
### Influencing a wide range of sustainability outcomes

**81% of respondents said that the Enviroschools Programme positively influenced the sustainability of their physical environment.**

Respondents rated a wide range of other sustainability outcomes and said the vast majority of these were also substantially influenced by the Enviroschools Programme. Some examples include:

- Citizenship**
  - Children and young people initiating and taking action on sustainability issues that are important to them – 74%
- Educational**
  - Tamariki/student motivation to learn – 84%
  - Teachers collaborating – 76%
- Social**
  - Ethics being a key part of people's decisions and actions – 79%
  - Healthy eating and physical activity – 78%
- Cultural**
  - Respecting differing beliefs – 80%
  - Correct pronunciation of te reo Māori – 79%
- Economic**
  - Integration of sustainability into their strategic and operational planning – 71%

\* Percentages are the total % of participants who rated the influence of Enviroschools as 'moderate', 'considerable' or 'high' (ratings 3, 4 and 5 on a 5-point scale)



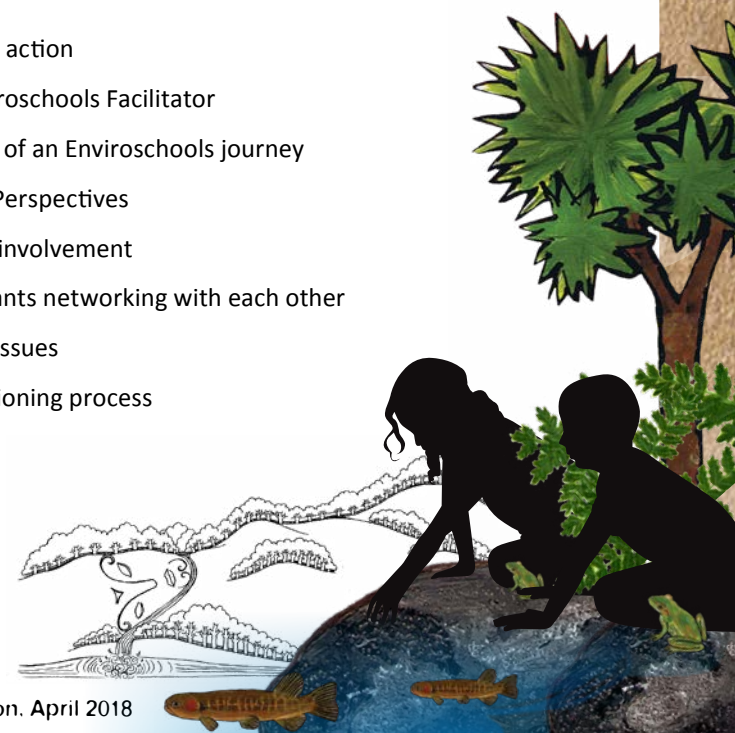
### A highly valued and effective programme

**The Enviroschools Programme was intentionally designed as a long-term journey supported by a collaborative network.**

The aspects of programme design strongly reinforced by the census results include:

- Tamariki/ Student-led action
- Support from an Enviroschools Facilitator
- The long-term nature of an Enviroschools journey
- Integration of Māori Perspectives
- Focus on community involvement
- Emphasis on participants networking with each other
- Links made to global issues
- The Enviroschools visioning process

TOIMATA  
FOUNDATION



The 2017 Enviroschools Census builds on 5 years of previous research, evaluation and programme development. © Toimata Foundation. April 2018

Enviroschools is helping to support the development of resilient, connected, sustainable communities and is empowering a generation of people who instinctively think and act sustainably.

Manaakitanga • Diversity and creativity • Whanaungatanga • Inter-connected • Aroha