

# Significance of the Enviroschools Kaupapa at this time - May 2020

Prepared for our council partners by Toimata Foundation



*Ka mihi ki a Ranginui, ki a Papatūānuku,  
Ka mihi ki te ngao o te wheiao!  
Toitū te whenua, toitū te tangata ki te wheiao ki te ao mārama.*

## Enviroschools is a nationwide movement for positive change

Enviroschools is a holistic approach to the development of resilient and sustainable communities. The complex environmental, social, cultural and economic challenges facing us today call for a collaborative response. Toimata Foundation creates a hub for a cross-sector approach bringing together over 100 organisations from Local and Central Government and Community.

Enviroschools now has significant reach across our country. Nationally over 1,300 early childhood education (ECE) centres and schools are part of the Enviroschools network. This is 12% of all ECE, 41% of all primary and 30% of all secondary.

Enviroschools is inspiring and empowering people of all ages through connection, creativity and action so they are actively engaged in creating a sustainable future. Through Enviroschools tens of thousands of innovative projects and lifestyle changes are happening in schools/centres, households, neighbourhoods, on farms, in local businesses and in all types of ecosystems. Some projects are small-scale in one school and others involve hundreds of people working across a whole catchment or community.

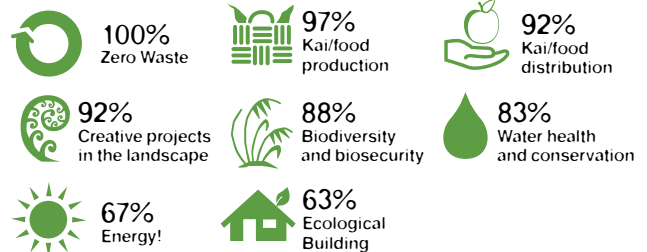
## Enviroschools is designed to meet Local Government Outcomes

Over 80% of all councils are Enviroschools partners. Enviroschools is specifically designed to meet multiple council outcomes through authentic relationships with the community. It is a proven approach, with a 20-year track record and backed by a 5-year research and evaluation programme.

The long-term holistic approach of Enviroschools creates a wide range of outcomes across all the Four Well-beings. This graphic, from the most recent Enviroschools National Census, shows the percentage of participants taking action across environmental, cultural, social, and economic aspects.

Councils also benefit from the co-investment model of Enviroschools. Councils contribute 20-25% of the total annual investment in Enviroschools, with the balance funded by Central Government and Community.

### Environmental sustainability actions:



### Cultural, Social and Economic sustainability actions:



\* Percentages are the total % of participants who are taking one or more actions in the area

*“Council benefits greatly from its relationship with Enviroschools. The programme makes a significant contribution to our work across a range of teams and brings a unique holistic kaupapa into the organisation. As the council moves more into collaborative ways of working the skills held and approach taken by the Enviroschools team will be ever more valuable.” – Manager Greater Wellington Regional Council*



*Intergenerational action for ecological restoration*



*Experiencing and connecting with Mātauranga Māori*



*Learning sustainable agriculture skills on-farm*



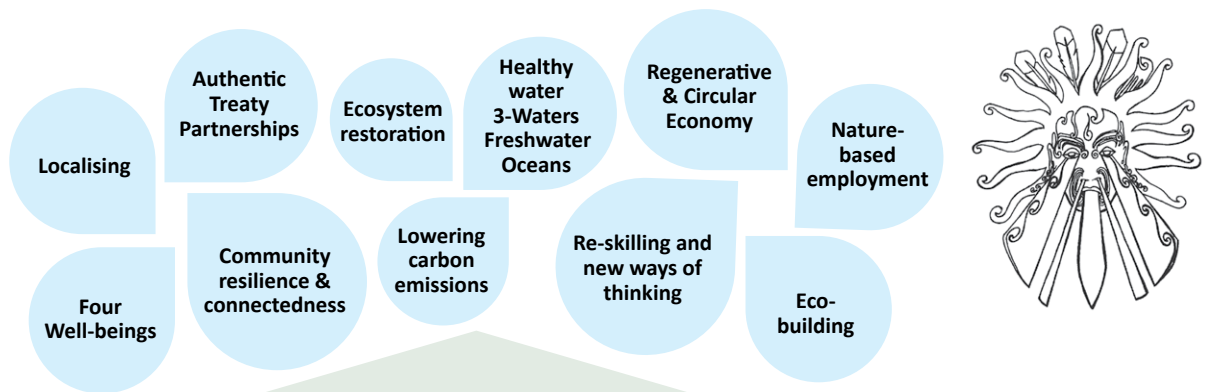
*Developing knowledge in eco-building and renewable energy*

# Enviroschools plays an essential role in creating a sustainable future

As we look beyond the restrictions of Covid-19, many people in this country, and around the world, are talking about a regenerative recovery that charts a course to a different future, a sustainable future. Concepts already familiar to Local Government are gaining traction, such as, localising, four well-beings, iwi partnerships, ecosystem restoration, 3-waters, and community resilience.

This diagram shows how Enviroschools, with the support of our council partners, contributes to positive change in communities across New Zealand, the changes that are needed to move us all towards a sustainable future.

## Aspects of a sustainable future



**Integrating Māori perspectives tikanga and concepts** as sustainability solutions unique to our country.

**Sharing knowledge** so localised learning and solutions can be applied nationwide.

**Connecting schools with communities** - building stronger connections between schools and their communities, and facilitating connections between schools.

**Supporting teachers** to weave learning into a real-life process of creating a sustainable school and community.

**Creating 'nature connectedness'** for people as the foundation for sustainable lifestyle choices.

**Fostering creativity** by people exploring and envisaging what a resilient and vibrant sustainable world could be.

**Empowering through action-learning** - people of all ages leading and participating in projects to design, plan, restore and construct all the different aspects of a sustainable community.

**Building citizenship and a strong sense of belonging** through collective local action.

**Addressing root causes** - helping people to understand the big picture of sustainability, the relationships between issues, and exploring ways to tackle root causes.

## Enviroschools' contribution to a sustainable future

**Holistic kaupapa and approach** that is grounded in Mātauranga Māori and empowers people of all ages

A highly **collaborative cross-sector model** of 100+ agencies working together to support local communities

**Expertise** A nationwide team with sustainability know how and specialised skills in facilitating participatory processes

**Comprehensive suite of resources and highly effective tools and processes** for collective community visioning, learning and action

**Large nationwide network** with long-term participation that has reach into thousands of communities

## Foundational elements of the Enviroschools approach

