



Enviroschools

a nationwide movement for positive change

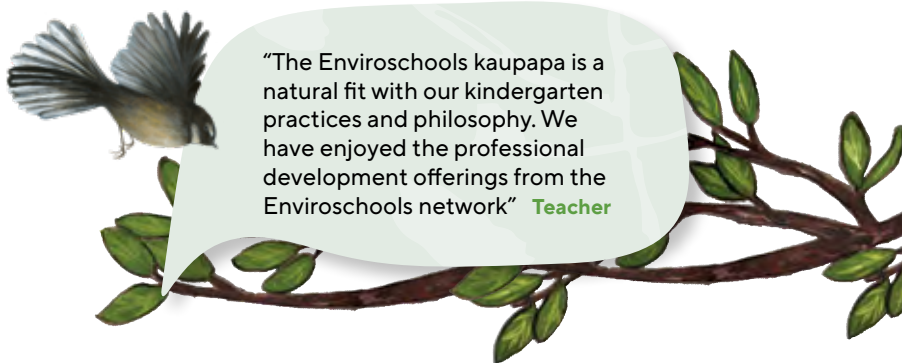


**Ka mihi ki a Ranginui, ki a Papatūānuku,
Ka mihi ki te ngao o te wheiao!
Toitū te whenua, Toitū te tangata, Toitū te ao.**



Enviroschools is a holistic kaupapa working to co-create connected and sustainable communities through learning and action. In our network, we are seeing tens of thousands of innovative and inspiring ways to care for our planet, learn creatively and live healthy, sustainable lives.

There are now over 1,500 Enviroschools nationwide. This large network of change-makers is supported by Toimata Foundation and founding partner Te Mauri Tau alongside 90 regional partners including over 60 councils and 20 early childhood associations.



“The Enviroschools kaupapa is a natural fit with our kindergarten practices and philosophy. We have enjoyed the professional development offerings from the Enviroschools network” **Teacher**

What is Enviroschools?

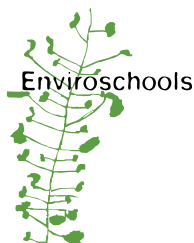
Enviroschools is a **network of schools and early childhood education (ECE) centres** learning and taking action together to create a more healthy, peaceful and sustainable world.

Through Enviroschools **young people are empowered to be active citizens – designing and leading projects** in their ECE centres, schools, neighbourhoods and beyond.

The Enviroschools approach is unique in that it takes a **holistic approach** to sustainability, drawing together all aspects of what takes place in the school or centre.

A **long-term relationship** is built with schools and centres in the network and the approach acknowledges that every ECE centre and school across the country has its own ecology, history, culture and community, so Enviroschools looks **different in every setting**.

TOIMATA
FOUNDATION



NATIONWIDE
as at October 2023

1,553
Enviroschools

14% of all early childhood centres

46% of all primary and intermediate

35% of all secondary

362,100+
Tamariki and students

15,700+
Teachers and other staff

150 Regional Coordinators and Facilitators

190+ Partners and Collaborators

Enviroschools in Early Childhood Education

There is a natural alignment between Te Whāriki and the Enviroschools kaupapa as they are both holistic frameworks

In the ECE context Enviroschools supports and promotes:

- **Kindergarten Association strategic priorities**
Te Tiriti o Waitangi, sustainability, leaders in ECE education
- **Links to local councils and government**
Sustainability initiatives, localised support from field experts, specific funding and grant support
- **Professional development and leadership opportunities**
National and regional professional development
- **Links to Kāhui Ako and transition pathways** through focused resources and localised hui within Enviroschools clusters
- **Links to current practice, curriculum and government priorities**
NELP, ERO indicators, Te Whāriki, assessment models, localised curriculum
- **A point of difference within the ECE sector**



"Part of the reason we chose this kindergarten for our children was their commitment to sustainability through the Enviroschools programme. It has really increased our knowledge as a family and we are now making changes at home"

Parent

ECE sector partnerships add reach, depth and heart to Enviroschools

Key to the nationwide reach of Enviroschools is a collaborative model involving 90+ partner organisations. Councils have been involved since Enviroschools was first launched in 2001. In the last decade a growing number of ECE organisations have become involved. Currently, 20 early childhood organisations, mostly Kindergarten Associations, are part of Enviroschools.

These ongoing partnerships bring a skilled nationwide network of Enviroschools ECE Facilitators, create space for regional responsiveness and offer a richness of creativity and commitment to the Enviroschools kaupapa. Together, Toimata Foundation, Councils and our ECE partners are co-creating a step-change in environmental action and empowering young learners and their whānau.

Ngā mihi nui koutou!

Current Partners (October 2023)



Ashburton Kindergartens • Auckland Kindergarten Association • Bear Park • Central Kids • Counties Manukau Kindergarten Association • Heretaunga Free Kindergarten Association • Inspired Kindergartens • Kaitiaki Kindergartens • Kindergartens South • Kindergarten Taranaki • Marlborough Kindergarten Association • Napier Kindergarten Association • Nelson Tasman Kindergartens • New Shoots Children's Centres • Northland Kindergarten Association • Ruahine Kindergarten Association • South Canterbury Kindergarten Association • Waikato Kindergartens • Waimate Kindergarten Association • Whānau Manaaki (formerly SOKA)

Learn more at www.enviroschools.org.nz

Guiding Principles and a suite of resources to support ECE Enviroschools

Five Guiding Principles Ngā Mātāpono of the Enviroschools kaupapa

EMPOWERED LEARNERS participate in meaningful ways in their community. Their unique perspectives and questions are valued and honoured. They feel connected to the whenua and support each other as a learning community to create meaningful change and hopeful action.

LEARNING FOR SUSTAINABILITY is a holistic, action and future-focused approach to learning, that engages our whole selves and addresses all aspects of our local and global environment.

TE AO MĀORI honours tangata whenua of this land. When we are envisioning and taking action for a sustainable future in our community, it is important that we are doing so alongside local hapū.

RESPECT FOR DIVERSITY is celebrated, and all forms of identity and ability are respected. Cultural traditions and practices from all people are experienced, valued and appreciated in learning spaces, honouring practices led by that community. Access to safe and engaging learning is available to everyone.

SUSTAINABLE COMMUNITIES act in ways that nurture all aspects of nature, including people, now and in the future. By working together and supporting each other we create safe, healthy, equitable and thriving communities.



"The Enviroschools resources are enabling us to explore and make a significant change in areas such as waste reduction, growing our own kai, connection to te ao Māori and increasing our collective knowledge of sustainability" **Head Teacher.**

Enviroschools is grounded in te ao Māori and local ecosystems

Celebrating indigenous wisdoms, knowledge and perspectives enriches and guides learning and action. Immersion in nature, history and local stories supports learners/ ākonga to be connected to the places and people where they live.



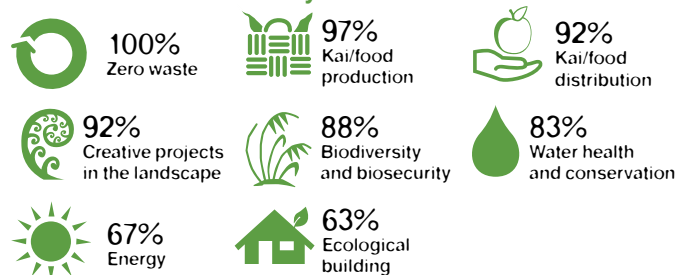
Ko au te whenua, ko te whenua ko au. "I resonate with the Enviroschools kaupapa as it aligns to the principles of te taiao, our oldest living tipuna, a living entity whom we as tangata whenua hold in the highest regard. The love and care we share for te taiao is celebrated from generation to generation through story, song and dance, and the Enviroschool kaupapa and programme draws on mātauranga Māori empowering tamariki and their whānau and whānau whānui to connect through holistic learning which is culturally responsive and action oriented."

Pandora Hawke | Te Atihaunui-a-paparangi, Ngāti Porou, Ngāti Tama, Ngā Rauru. Community Engagement Advisor & Māori Education Facilitator, Auckland Kindergarten Association.

Long-term journeys with wide-ranging outcomes

Enviroschools research over many years has highlighted that participants on a long-term journey are engaging in learning and action across many aspects of sustainability.

Environmental sustainability actions:



Cultural, Social and Economic sustainability actions:



* Percentages are the total % of participants who are taking one or more actions in the area



Enviroschools and the National Education and Learning Priorities (NELP)

The Enviroschools kaupapa directly links to the NELP objectives. The five Guiding Principles of the kaupapa support each objective particularly where they are learner centric, inclusive and incorporate mātauranga Māori.

“Enviroschools within the ECE sector are inspiring and creating effective relationships with local schools. This kaupapa supports transition to school and connection to local Kāhui Ako”
Principal.

ENVIROSCHOOLS GUIDING PRINCIPLES NGĀ MĀTĀPONO

NATIONAL EDUCATION AND LEARNING PRIORITIES (NELP)



OBJECTIVE
1

LEARNERS AT THE CENTRE

Learners with their whānau are at the centre of education

Ensure places of learning are safe, inclusive and free from racism, discrimination and bullying

Have high aspirations for every learner/ākonga, and support these by partnering with their whānau and communities to design and deliver education that responds to their needs, and sustains their identities, languages and cultures

OBJECTIVE
2

BARRIER FREE ACCESS

Great education opportunities and outcomes are within reach for every learner

Reduce barriers to education for all, including for Māori and Pacific learners/ākonga, disabled learners/ākonga and those with learning support needs

Ensure every learner/ākonga gains sound foundation skills, including language, literacy and numeracy

OBJECTIVE
3

QUALITY TEACHING AND LEADERSHIP

Quality teaching and leadership make the difference for learners and their whānau

Meaningfully incorporate te reo Māori and tikanga Māori into the everyday life of the place of learning

Develop staff strengthen teaching, leadership and learner support capability across the education workforce

OBJECTIVE
4

FUTURE OF LEARNING AND WORK

Learning that is relevant to the lives of New Zealanders today and throughout their lives

Collaborate with industries and employers to ensure learners/ākonga have the skills, knowledge and pathways to succeed in work

When an Enviroschool is connecting to and taking action around the five Guiding Principles they are meeting the four NELP objectives (relating to ECE and Schools).

This is also reinforced through the whole school/centre approach where all actions purposefully consider the four key areas:

- Place/Wāhi
- People and Participation/Tangata
- Programmes/Kaupapa Ako
- Practices/Tikanga