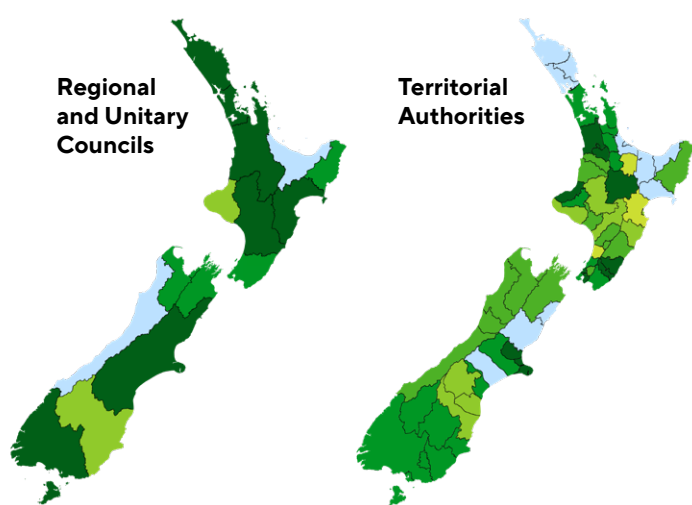


Enviroschools is a proven approach that effectively meets local government outcomes



Enviroschools is a holistic approach to the development of sustainable and resilient communities. There are now over 1,500 Enviroschools nationwide; supported by Toimata Foundation and 190+ regional partners and collaborators, including 60+ councils and 20 early childhood associations. Through Enviroschools, children and young people are empowered to connect with and explore the environment, then plan, design and take action in their local places in collaboration with their communities.

Ngā mihi nui. Thank You. Partnerships with councils provide a stable support base for the nationwide network of Enviroschools



Council investment has been key to the success of Enviroschools for two decades. Over 80% of councils are involved in providing regional leadership and on the ground support for participants nationwide.

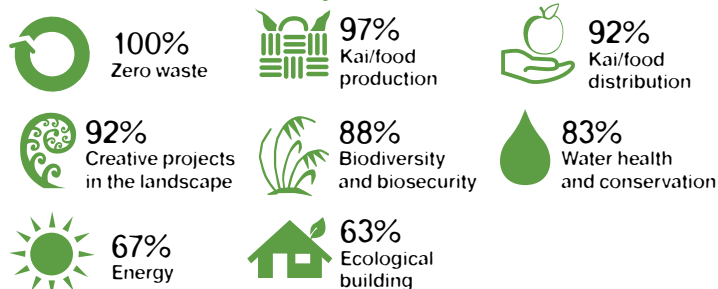
Key to council involvement in Enviroschools



Enviroschools is proven and uniquely-placed to meet multiple council outcomes

The effectiveness of Enviroschools stems from authentic relationships with communities and a long-term holistic approach. The graphic (right), from the most recent Enviroschools National Census, shows the percentage of participants taking action across environmental, cultural, social, and economic aspects of well-being. With a track record of two decades and an extensive programme of external research and evaluation, Enviroschools is proven.

Environmental sustainability actions:



Cultural, Social and Economic sustainability actions:



* Percentages are the total % of participants who are taking one or more actions in the area

“Enviroschools is a very high-performing programme and achieves this performance through high levels of systemic support from Toimata Foundation”

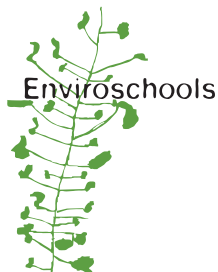
Kinnect Group – evaluation experts



Councils benefit from the co-investment model of Enviroschools

Councils contribute around a third of the total annual investment in Enviroschools, with the balance funded by central government and community. With core funding from central government since 2012, Toimata Foundation continues to develop Enviroschools in collaboration with our partners nationwide.

Learn more at enviroschools.org.nz



Enviroschools in Your Region

TĀMAKI MAKĀURAU – AUCKLAND REGION



Enviroschools is now a significant network with over 1,500 early childhood centres and schools nationwide. Enviroschools empowers learners of all ages through connection, creativity and action, enabling the development of sustainable and resilient communities.

321

Enviroschools

(94 Early Childhood Centres, 227 Schools)

137,200 Tamariki & students

8% of early childhood **39% of secondary**
44% of primary & intermediate **20% of composite and other**

6 Regional Partners

32 Collaborators

enviroschools.org.nz/regions/auckland



Regionally, the Enviroschools Programme is shaped by the partner organisations, the participants and the local situation.

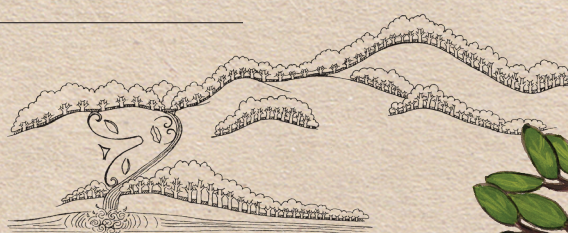
All regions have:

- A Regional Coordinator in a leadership role who is employed by the coordinating agency.
- Enviroschools Community Facilitators who are employed or funded by the regional partners.
- Strong working relationships with each other, and with Toimata, to share knowledge and to strengthen and grow the impact of Enviroschools in communities.



Tāmaki Makaurau – Auckland
Regional Coordinator
Susan Hutchinson-Daniel

E.sustainableschools@aucklandcouncil.govt.nz



Coordinating Agency



Regional Partners



Regional Collaborators

Auckland King Tides Initiative
Auckland Transport
Beautification Trust
BLAKE
Community Waitakere
Cue Haven
Diabetes Foundation Aotearoa/ Gardens 4 Health
Eastern Bays Songbird Project
EcoMatters
Hibiscus Coast Zero Waste
Māngere East Family Centre
Matuku Link

Nga Ara Whetu: The Centre for Climate, Biodiversity and Society, The University of Auckland
Nga Kaitiaki Hapori o Pourewa, The Community Guardians of Pourewa
NZ Marine Studies Centre, Otago University
Pacific Vision Aotearoa
Pest Free Howick
Rākau Tautoko
School of Natural Sciences, Massey University
Sir Peter Blake MERC
Sustainable Coastlines Charitable Trust
Tāmaki WRAP

Te Atatu Marae Whanau Committee
Te Hōnonga a Iwi: Restoring Rosedale Park - North Harbour
Hockey Association
Te Pū-A-Ngā Māra
The School of Psychology, The University of Auckland
Trees For Survival
Urban Ark Manawa Taiao
Waiheke Resources Trust
Whau River Catchment Trust
Whitebait Connection
Work and Income NZ / Improving School Attendance Programme