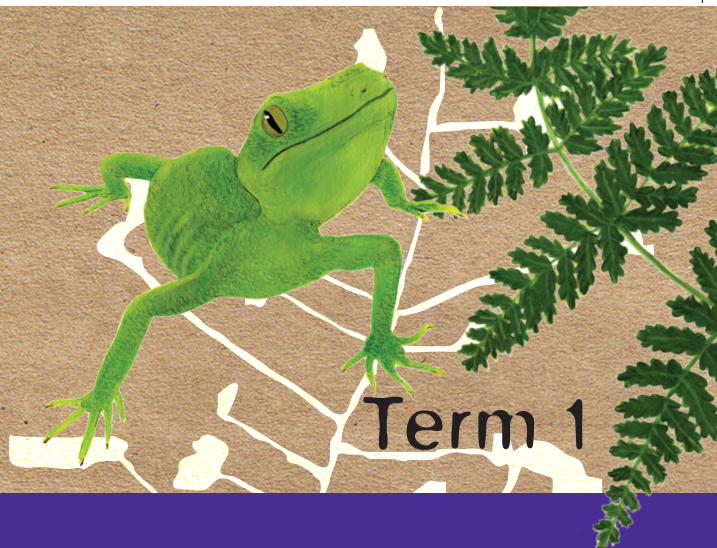


TAIRĀWHITI

Enviroschools



Term 1

Kia ora koutou

Tēnā koutou katoa

E hora nei ngā mihi manahau, ki a Ranginui rāua ko Papatūānuku, rātou ko ō rāua uri, otirā, ki te hononga tāngaengae o ngā mea katoa. E rere tonu ngā mihi ki a koutou e ngā kaihāpai, e ngā kaikawe o te kaupapa whānau o Enviroschools.

A huge mihi to all of you in our Enviroschools network. We would like to take this time to mihi to you all and acknowledge the special space you are all holding within your Kura, Centre or place of work. Thank you for continuing the journey of a more sustainable and healthier place. Tēnā rawa atu koutou katoa.

Welcome to our Tairāwhiti Enviroschools newsletter. We are looking forward to another fantastic year of mahi for 2024. In Raumati (Summer) you will notice your mārā kai will be providing kai uncontrollably! We have started our journey learning how to grow hue (gourds) which is super exciting.

Mārā Kai MasterChef will be happening again later in the year so be sure to preserve, pickle, freeze and save any excess growing in your gardens at this time of the year! Koromiko in your centres might still be flowering beautifully and seeds from titoki, kawakawa and karaka are abundant.

Welcome to our new centres

Welcome to our new Early Childhood Centres who became Enviroschools during 2023:

- The Farmyard for Early Learners
- Gisborne Montessori Preschool
- Knox Street Kindergarten
- Pickering Street Kindergarten
- Rewanui Early Learning Centre
- Barnardos Early Learning Awhi Tairāwhiti
- Gisborne Community Early Education Centre Te Whare Tiaki Tamariki

Action Fund Applications OPEN NOW!

It was great to support these projects in 2023.

- Wainui Beach School - shade house extension for their native trees
- Tiniroto School - fruit trees
- Te Wharau School - visit to WildLab

Applications for 2024 close April 12th – contact us with any questions or for help for ideas.

Thanks to Gisborne District Council and Eastland Port for funding this year.



TAIRĀWHITI

Enviroschools

High School Rangatahi Climate Action Group Applications Open!

We are starting up the rangatahi climate action group for 2024. This is a space for youth aged 13 - 18 to come together and take climate action both in their Kura and in the larger community. Come along to a day at WildLab February 21st to meet students from other schools interested in the environment and learn about our most precious resource - te wai (water).



Use the QR code to register your interest in being part of the group



Impressed to see such a friendly kereru during the visit!



2023 WildLab visit learning about the 1769 garden, connection to place as well as land use and the options for the future in Te Tairāwhiti

RESOURCES AVAILABLE FOR LOAN! Climate Change Kete and NEW Living Landscapes Suitcase

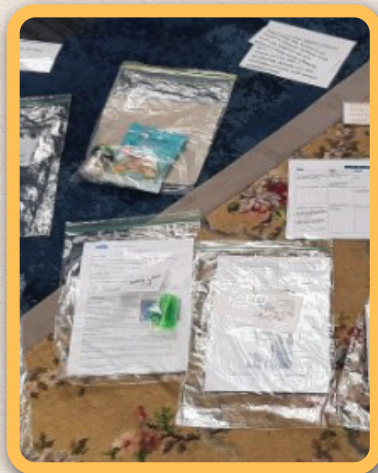
Resources for all activities are included inside the kete with instructions and key concepts. Staff PLD is available to go through how to use the resources so please book us in to go through the resources.



Climate change kete



Living landscapes kete



Contents from te kete o Climate Change including key concepts and activities ready to use

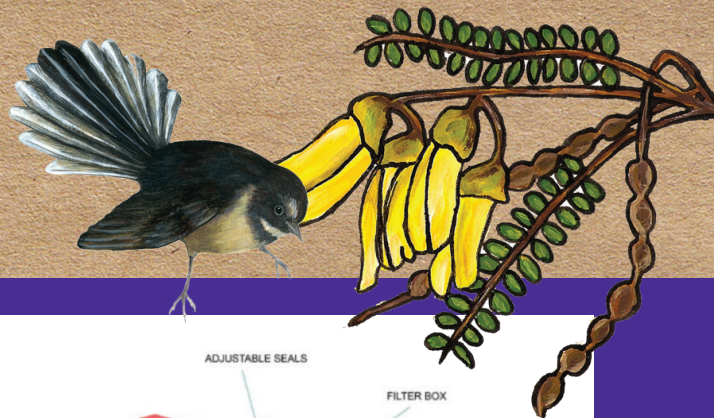


Learning about the contents and activities within the kete



TAIRĀWHITI

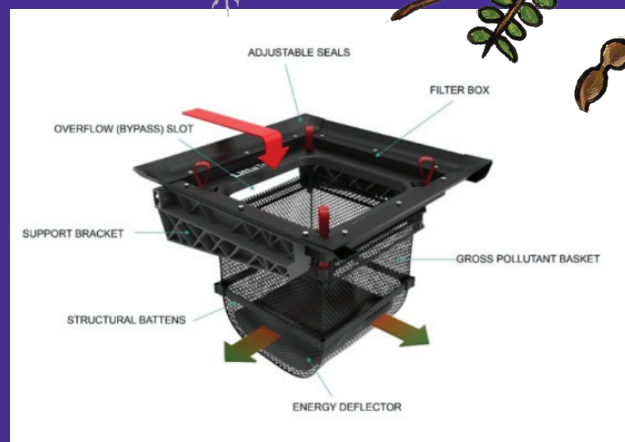
Enviroschools



LittaTrap Placement

How does rubbish get from your kura and community to the awa and moana? Tawhirimatea (wind) and Tangaroa (water) move/blow the rubbish into stormwater drains in and around your kura. All that water flows to your local awa and then out to the moana. We can trap that rubbish and capture important data with LittaTraps. If your school would like to help Sustainable Coastlines manage waste and capture data, let us know and we can help to establish a LittaTrap in a drain at your school.

To learn more about the kaupapa, follow this link:
<https://litterintelligence.org>



Example of one of the LittaTraps currently set up in the drains outside Te Wharau and Kaiti School

Te Wero ia Wenerei

It's back this year! 2023 saw 7 schools take up the challenge of walking, biking, scootering or joining others in the bus to get to school. The carparks were noticeably less busy on a Wednesday as more and more students made their way to school without the use of fossil fuels. The challenge is continuing this year with the help of Waka Kotahi and Mercury Energy to ensure schools that enter, receive awesome prizes.

Follow along on the Facebook page for updates 'Te wero ia Wenerei - Tairāwhiti' or register on the website www.wednesdaychallenge.co.nz/location/tairawhiti



Te Wharau School celebrated the final week with dress ups, street art and encouragement to those choosing active transport to get to school

Let's Celebrate SEAWEEK!

We are available to run any Seaweeek activities you would like to do with your classes both in and out of school during the weeks leading up to or after Seaweeek (4th - 8th March). Examples of what we can help with are rocky shore observations, safe size guides, marine ecosystem study, beach clean ups and more. Contact Kauri or Bridget with enquiries.



Awapuni School cleaning up Oneroa

TAIRĀWHITI

Enviroschools

Garden to Table Programme in Schools

Garden to Table is a registered charity who will help grow, harvest, prepare and share kai within your school. Students develop growing and cooking skills to see the entire process up to sharing a kai with their whanau.

An annual subscription: \$299 + GST

They are based in Hawkes Bay and are willing to extend their services to interested Kura in Te Tairāwhiti. Contact info@gardentotable.org.nz for more information and to sign up.



Photos from the Garden to Table website



Caretakers Workshop

In March (date TBC) we will be offering a workshop for caretakers to build confidence in using sustainable practices in their school community.

The workshop will promote,

- practical knowledge of tree maintenance, waste management, pruning, mulching, weed control, native trees and irrigation
- hands-on action
- learning through a local expert and resources
- an opportunity for caretakers to learn about their role in the Enviroschools programme
- networking opportunities with other caretakers

Keep your eyes out for further details!

Keep up to date!

We are offering the following events this year - more information to follow

Term 2

- Why Do our Roads and Hills Fall Apart when it Rains? - Hosted at Gisborne District Council date and applications TBC
- Eco-hut building competition

Term 3

- School tours of other Enviroschools

Term 4

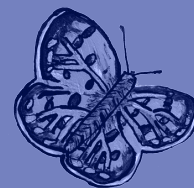
- Māra kai MasterChef

All year round

- Waste workshops at Tairāwhiti Environment Centre
- Gray's Bush visits

Follow us on the social media pages to keep up to date!

Facebook & Instagram: Tairāwhiti Enviroschools



Charlotte Phelps | P 027 209 3226 | E charlotte.phelps@gdc.govt.nz

Bridget Dick | P 027 209 5486 | E bridget.dick@gdc.govt.nz

Kauri Forno | P 021 125 9442 | E kauri_99@yahoo.co.uk

Supported by: Gisborne District Council | HB Williams Trust | JN-Williams Trust | Eastland Port

